

QELC-2-1

2.4mm, DC~50GHz

Features:

- * Low VSWR
- * No welding
- * Reusable
- * Easy installation

Applications:

- * Laboratory Test

Electrical

Frequency:	DC~50GHz
VSWR:	1.3 max.
Impedance:	50Ω

Mechanical

RF Connector:	2.4mm
Outer Conductor:	Passivated stainless steel
Dielectric:	PEI & PTFE
Inner Conductor:	Gold plated beryllium copper

Environmental

Temperature: -55~+165°C

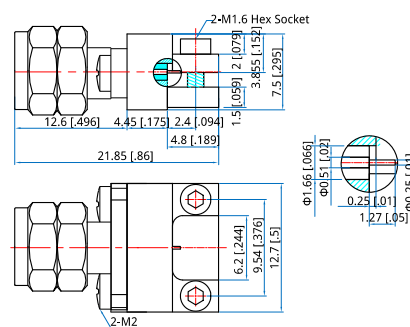
How To Order

QELC-2-1 - Outline A

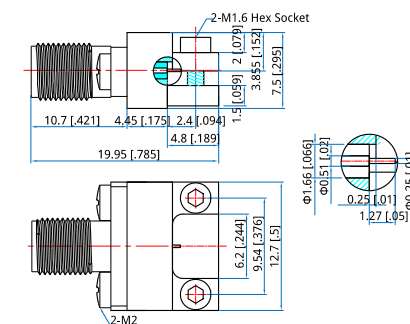
QELC-2F-1 - Outline B

Customization is available upon request.

Outline Drawings



Outline A



Outline B

Unit: mm [in]

Tolerance: $\pm 0.2\text{mm}$ [$\pm 0.008\text{in}$]